

# Verification Report

Report No.ECL03I000733001

Page 1 of 25

## CENTRE TESTING INTERNATIONAL



**Applicant** ANHUI WANNAN ELECTRIC MACHINE CO.,LTD.  
**Address** 86,NANHUA ROAD,JINGCHUAN TOWN,JINGXIAN COUNTY,  
ANHUI PROVINCE  
**Product Name** Low Voltage AC Induction motor(rated voltage $\leq$ 1140V,frame size $\leq$   
H450)  
**Product Part No.** YX3  
**Client Reference** YP2, YE3, YB3, YBX3, YD2, YH2, YEJ2, YXEJ, YVF2, YXVF,  
**Information** NEP Series

### Conclusion

Tested Sample	According to directive	Result
Low Voltage AC Induction motor(rated voltage $\leq$ 1140V,frame size $\leq$ H450)	2011/65/EU*	Pass

\*2011/65/EU is a new version of RoHS Directive (2002/95/EC), which focuses on restriction of the use of certain hazardous substances (Lead(Pb), Cadmium(Cd), Mercury(Hg), Hexavalent Chromium(Cr(VI)), Polybrominated Biphenyls(PBBs),Polybrominated Diphenyl Ethers(PBDEs))in electrical and electronic equipment.  
Pass means that the results shown on the report do not exceed the limits set by RoHS Directive 2011/65/EU.

Tested by

Xiang Qing Jiang

Reviewed by

Sha Chen

Approved by

Lin Zhang

Date

Mar. 10, 2016

Lin Zhang

Approved Signatory

No. R138201448

Report Seal  
Centre Testing International(Ningbo)Co.,Ltd.

7-8/F/.,Building A,No.750.Chuangyuan Road,Gaoxin District,Ningbo,Zhejiang,China

# Verification Report

Report No.ECL03I000733001

Page 2 of 25

## Report Content

Sample Information	.....	3
Test Requested	.....	3
Sample Photo	.....	3
Test Results	.....	4
Test Method	.....	20
Test Process	.....	20
Photos of Test Components	.....	23

# Verification Report

Report No.ECL03I000733001

Page 3 of 25

**The following sample(s) and sample information was/were submitted and identified by/on the behalf of the client**

Sample Received Date Feb. 29, 2016

Testing Period Feb. 29, 2016 to Mar. 10, 2016

**Test Requested**

- 1.As specified by client, to screen the Lead, Mercury, Cadmium, Chromium and Bromine in the submitted samples by XRF Spectroscopy.
- 2.As specified by client, when screening results exceed the XRF screening limit in IEC62321-3-1:2013 Ed 1.0, further use of chemical methods are required to test the Lead, Mercury, Cadmium, Hexavalent Chromium and PBBs&PBDEs in the submitted samples

## Photo of the Product



Low Voltage AC Induction motor(rated voltage $\leq$ 1140V,frame size $\leq$ H450)

# Verification Report

Report No.ECL03I000733001

Page 4 of 25

## Test Results

Sample No.	Tested Sample/Part Description	Tested Items	XRF Screening Test	Chemical Test (mg/kg)	Conclusion
1	White label with multicolor printing	Pb	BL	/	PASS
		Cd	BL	/	
		Hg	BL	/	
		Cr (Cr(VI))	BL	/	
		Br(PBBs&PBDEs)	BL	/	
2	White label with multicolor printing	Pb	BL	/	PASS
		Cd	BL	/	
		Hg	BL	/	
		Cr (Cr(VI))	BL	/	
		Br(PBBs&PBDEs)	BL	/	
3	White label with black printing	Pb	BL	/	PASS
		Cd	BL	/	
		Hg	BL	/	
		Cr (Cr(VI))	BL	/	
		Br(PBBs&PBDEs)	BL	/	
4.1	Light blue plating	Pb	BL	/	PASS
		Cd	BL	/	
		Hg	BL	/	
		Cr (Cr(VI))	OL*	N.D.(Negative)	
		Br(PBBs&PBDEs)	/	/	
4.2	Metal base	Pb	BL	/	PASS
		Cd	BL	/	
		Hg	BL	/	
		Cr (Cr(VI))	OL*	N.D.(Negative)	
		Br(PBBs&PBDEs)	/	/	
5.1	Black plating	Pb	BL	/	PASS
		Cd	BL	/	
		Hg	BL	/	
		Cr (Cr(VI))	BL	/	
		Br(PBBs&PBDEs)	/	/	

# Verification Report

Report No.ECL03I000733001

Page 5 of 25

Sample No.	Tested Sample/Part Description	Tested Items	XRF Screening Test	Chemical Test (mg/kg)	Conclusion
5.2	Metal base	Pb	BL	/	PASS
		Cd	BL	/	
		Hg	BL	/	
		Cr (Cr(VI))	BL	/	
		Br(PBBs&PBDEs)	/	/	
6.1	Silvery plating	Pb	BL	/	PASS
		Cd	BL	/	
		Hg	BL	/	
		Cr (Cr(VI))	BL	/	
		Br(PBBs&PBDEs)	/	/	
6.2	Metal base	Pb	BL	/	PASS
		Cd	BL	/	
		Hg	BL	/	
		Cr (Cr(VI))	BL	/	
		Br(PBBs&PBDEs)	/	/	
7	Golden metal	Pb	BL	/	PASS
		Cd	BL	/	
		Hg	BL	/	
		Cr (Cr(VI))	BL	/	
		Br(PBBs&PBDEs)	/	/	
8	Golden metal	Pb	BL	/	PASS
		Cd	BL	/	
		Hg	BL	/	
		Cr (Cr(VI))	BL	/	
		Br(PBBs&PBDEs)	/	/	
9.1	Light blue plating	Pb	BL	/	PASS
		Cd	BL	/	
		Hg	BL	/	
		Cr (Cr(VI))	BL	/	
		Br(PBBs&PBDEs)	/	/	

# Verification Report

Report No.ECL03I000733001

Page 6 of 25

Sample No.	Tested Sample/Part Description	Tested Items	XRF Screening Test	Chemical Test (mg/kg)	Conclusion
9.2	Metal base	Pb	BL	/	PASS
		Cd	BL	/	
		Hg	BL	/	
		Cr (Cr(VI))	BL	/	
		Br(PBBs&PBDEs)	/	/	
10	Silvery metal	Pb	BL	/	PASS
		Cd	BL	/	
		Hg	BL	/	
		Cr (Cr(VI))	BL	/	
		Br(PBBs&PBDEs)	/	/	
11.1	Black plating	Pb	BL	/	PASS
		Cd	BL	/	
		Hg	BL	/	
		Cr (Cr(VI))	X*	N.D.(Negative)	
		Br(PBBs&PBDEs)	/	/	
11.2	Metal base	Pb	BL	/	PASS
		Cd	BL	/	
		Hg	BL	/	
		Cr (Cr(VI))	X*	N.D.(Negative)	
		Br(PBBs&PBDEs)	/	/	
12.1	Light blue plating	Pb	BL	/	PASS
		Cd	BL	/	
		Hg	BL	/	
		Cr (Cr(VI))	BL	/	
		Br(PBBs&PBDEs)	/	/	
12.2	Metal base	Pb	BL	/	PASS
		Cd	BL	/	
		Hg	BL	/	
		Cr (Cr(VI))	BL	/	
		Br(PBBs&PBDEs)	/	/	

# Verification Report

Report No.ECL03I000733001

Page 7 of 25

Sample No.	Tested Sample/Part Description	Tested Items	XRF Screening Test	Chemical Test (mg/kg)	Conclusion
13.1	Black plating	Pb	BL	/	PASS
		Cd	BL	/	
		Hg	BL	/	
		Cr (Cr(VI))	BL	/	
		Br(PBBs&PBDEs)	/	/	
13.2	Metal base	Pb	BL	/	PASS
		Cd	BL	/	
		Hg	BL	/	
		Cr (Cr(VI))	BL	/	
		Br(PBBs&PBDEs)	/	/	
14	Blue plastic	Pb	BL	/	PASS
		Cd	BL	/	
		Hg	BL	/	
		Cr (Cr(VI))	BL	/	
		Br(PBBs&PBDEs)	BL	/	
15.1	Grey coating	Pb	BL	/	PASS
		Cd	BL	/	
		Hg	BL	/	
		Cr (Cr(VI))	BL	/	
		Br(PBBs&PBDEs)	BL	/	
15.2	Metal base	Pb	BL	/	PASS
		Cd	BL	/	
		Hg	BL	/	
		Cr (Cr(VI))	BL	/	
		Br(PBBs&PBDEs)	/	/	
16	Label with multicolor printing	Pb	BL	/	PASS
		Cd	BL	/	
		Hg	BL	/	
		Cr (Cr(VI))	BL	/	
		Br(PBBs&PBDEs)	BL	/	

# Verification Report

Report No.ECL03I000733001

Page 8 of 25

Sample No.	Tested Sample/Part Description	Tested Items	XRF Screening Test	Chemical Test (mg/kg)	Conclusion
17.1	Metal base	Pb	X*	N.D.	PASS
		Cd	BL	/	
		Hg	BL	/	
		Cr (Cr(VI))	BL	/	
		Br(PBBs&PBDEs)	/	/	
17.2	Red paint	Pb	BL	/	PASS
		Cd	BL	/	
		Hg	BL	/	
		Cr (Cr(VI))	BL	/	
		Br(PBBs&PBDEs)	BL	/	
18.1	Black rubber	Pb	BL	/	PASS
		Cd	BL	/	
		Hg	BL	/	
		Cr (Cr(VI))	BL	/	
		Br(PBBs&PBDEs)	BL	/	
18.2	Red paint	Pb	BL	/	PASS
		Cd	BL	/	
		Hg	BL	/	
		Cr (Cr(VI))	BL	/	
		Br(PBBs&PBDEs)	BL	/	
19	Metal base	Pb	OL*	95	PASS
		Cd	BL	/	
		Hg	BL	/	
		Cr (Cr(VI))	BL	/	
		Br(PBBs&PBDEs)	/	/	
20	Metal base	Pb	BL	/	PASS
		Cd	BL	/	
		Hg	BL	/	
		Cr (Cr(VI))	BL	/	
		Br(PBBs&PBDEs)	/	/	

# Verification Report

Report No.ECL03I000733001

Page 9 of 25

Sample No.	Tested Sample/Part Description	Tested Items	XRF Screening Test	Chemical Test (mg/kg)	Conclusion
21	Black rubber	Pb	BL	/	PASS
		Cd	BL	/	
		Hg	BL	/	
		Cr (Cr(VI))	BL	/	
		Br(PBBs&PBDEs)	BL	/	
22	Black rubber	Pb	BL	/	PASS
		Cd	BL	/	
		Hg	BL	/	
		Cr (Cr(VI))	BL	/	
		Br(PBBs&PBDEs)	BL	/	
23	Black plastic	Pb	BL	/	PASS
		Cd	BL	/	
		Hg	BL	/	
		Cr (Cr(VI))	BL	/	
		Br(PBBs&PBDEs)	BL	/	
24	Black rubber	Pb	BL	/	PASS
		Cd	BL	/	
		Hg	BL	/	
		Cr (Cr(VI))	BL	/	
		Br(PBBs&PBDEs)	BL	/	
25.1	Silvery plating	Pb	BL	/	PASS
		Cd	BL	/	
		Hg	BL	/	
		Cr (Cr(VI))	BL	/	
		Br(PBBs&PBDEs)	/	/	
25.2	Metal base	Pb	BL	/	PASS
		Cd	BL	/	
		Hg	BL	/	
		Cr (Cr(VI))	BL	/	
		Br(PBBs&PBDEs)	/	/	

# Verification Report

Report No.ECL03I000733001

Page 10 of 25

Sample No.	Tested Sample/Part Description	Tested Items	XRF Screening Test	Chemical Test (mg/kg)	Conclusion
26.1	Light blue plating	Pb	BL	/	PASS
		Cd	BL	/	
		Hg	BL	/	
		Cr (Cr(VI))	BL	/	
		Br(PBBs&PBDEs)	/	/	
26.2	Metal base	Pb	BL	/	PASS
		Cd	BL	/	
		Hg	BL	/	
		Cr (Cr(VI))	BL	/	
		Br(PBBs&PBDEs)	/	/	
27.1	Light blue plating	Pb	BL	/	PASS
		Cd	BL	/	
		Hg	BL	/	
		Cr (Cr(VI))	BL	/	
		Br(PBBs&PBDEs)	/	/	
27.2	Metal base	Pb	BL	/	PASS
		Cd	BL	/	
		Hg	BL	/	
		Cr (Cr(VI))	BL	/	
		Br(PBBs&PBDEs)	/	/	
28	Plastic with green covering	Pb	BL	/	PASS
		Cd	BL	/	
		Hg	BL	/	
		Cr (Cr(VI))	BL	/	
		Br(PBBs&PBDEs)	BL	/	
29.1	Light blue plating	Pb	BL	/	PASS
		Cd	BL	/	
		Hg	BL	/	
		Cr (Cr(VI))	BL	/	
		Br(PBBs&PBDEs)	/	/	

# Verification Report

Report No.ECL03I000733001

Page 11 of 25

Sample No.	Tested Sample/Part Description	Tested Items	XRF Screening Test	Chemical Test (mg/kg)	Conclusion
29.2	Metal base	Pb	BL	/	PASS
		Cd	BL	/	
		Hg	BL	/	
		Cr (Cr(VI))	BL	/	
		Br(PBBs&PBDEs)	/	/	
30.1	Light blue plating	Pb	BL	/	PASS
		Cd	BL	/	
		Hg	BL	/	
		Cr (Cr(VI))	BL	/	
		Br(PBBs&PBDEs)	/	/	
30.2	Metal base	Pb	BL	/	PASS
		Cd	BL	/	
		Hg	BL	/	
		Cr (Cr(VI))	BL	/	
		Br(PBBs&PBDEs)	/	/	
31	White braided thread	Pb	BL	/	PASS
		Cd	BL	/	
		Hg	BL	/	
		Cr (Cr(VI))	BL	/	
		Br(PBBs&PBDEs)	BL	/	
32	Yellow braided thread	Pb	BL	/	PASS
		Cd	BL	/	
		Hg	BL	/	
		Cr (Cr(VI))	BL	/	
		Br(PBBs&PBDEs)	BL	/	
33.1	Black plating	Pb	BL	/	PASS
		Cd	BL	/	
		Hg	BL	/	
		Cr (Cr(VI))	BL	/	
		Br(PBBs&PBDEs)	/	/	

# Verification Report

Report No.ECL03I000733001

Page 12 of 25

Sample No.	Tested Sample/Part Description	Tested Items	XRF Screening Test	Chemical Test (mg/kg)	Conclusion
33.2	Metal base	Pb	BL	/	PASS
		Cd	BL	/	
		Hg	BL	/	
		Cr (Cr(VI))	BL	/	
		Br(PBBs&PBDEs)	/	/	
34	Silvery metal	Pb	BL	/	PASS
		Cd	BL	/	
		Hg	BL	/	
		Cr (Cr(VI))	BL	/	
		Br(PBBs&PBDEs)	/	/	
35	Silvery metal	Pb	BL	/	PASS
		Cd	BL	/	
		Hg	BL	/	
		Cr (Cr(VI))	BL	/	
		Br(PBBs&PBDEs)	/	/	
36.1	Black plating	Pb	BL	/	PASS
		Cd	BL	/	
		Hg	BL	/	
		Cr (Cr(VI))	BL	/	
		Br(PBBs&PBDEs)	/	/	
36.2	Metal base	Pb	BL	/	PASS
		Cd	BL	/	
		Hg	BL	/	
		Cr (Cr(VI))	BL	/	
		Br(PBBs&PBDEs)	/	/	
37	Silvery metal	Pb	BL	/	PASS
		Cd	BL	/	
		Hg	BL	/	
		Cr (Cr(VI))	BL	/	
		Br(PBBs&PBDEs)	/	/	

# Verification Report

Report No.ECL03I000733001

Page 13 of 25

Sample No.	Tested Sample/Part Description	Tested Items	XRF Screening Test	Chemical Test (mg/kg)	Conclusion
38	Metal base	Pb	BL	/	PASS
		Cd	BL	/	
		Hg	BL	/	
		Cr (Cr(VI))	X*	N.D.(Negative)	
		Br(PBBs&PBDEs)	/	/	
39	Metal base	Pb	BL	/	PASS
		Cd	BL	/	
		Hg	BL	/	
		Cr (Cr(VI))	BL	/	
		Br(PBBs&PBDEs)	/	/	
40	White plastic	Pb	BL	/	PASS
		Cd	BL	/	
		Hg	BL	/	
		Cr (Cr(VI))	BL	/	
		Br(PBBs&PBDEs)	BL	/	
41	Silvery metal	Pb	BL	/	PASS
		Cd	BL	/	
		Hg	BL	/	
		Cr (Cr(VI))	X*	N.D.(Negative)	
		Br(PBBs&PBDEs)	/	/	
42	Silvery metal	Pb	BL	/	PASS
		Cd	BL	/	
		Hg	BL	/	
		Cr (Cr(VI))	BL	/	
		Br(PBBs&PBDEs)	/	/	
43	Yellow coating	Pb	BL	/	PASS
		Cd	BL	/	
		Hg	BL	/	
		Cr (Cr(VI))	BL	/	
		Br(PBBs&PBDEs)	BL	/	

# Verification Report

Report No.ECL03I000733001

Page 14 of 25

Sample No.	Tested Sample/Part Description	Tested Items	XRF Screening Test	Chemical Test (mg/kg)	Conclusion
44	Metal base	Pb	BL	/	PASS
		Cd	BL	/	
		Hg	BL	/	
		Cr (Cr(VI))	BL	/	
		Br(PBBs&PBDEs)	/	/	
45.1	Silvery plating	Pb	BL	/	PASS
		Cd	BL	/	
		Hg	BL	/	
		Cr (Cr(VI))	BL	/	
		Br(PBBs&PBDEs)	/	/	
45.2	Metal base	Pb	BL	/	PASS
		Cd	BL	/	
		Hg	BL	/	
		Cr (Cr(VI))	BL	/	
		Br(PBBs&PBDEs)	/	/	
46	Silvery metal with blue ink and red ink	Pb	BL	/	PASS
		Cd	BL	/	
		Hg	BL	/	
		Cr (Cr(VI))	OL*	N.D	
		Br(PBBs&PBDEs)	BL	/	
47	Metal base	Pb	OL*	N.D	PASS
		Cd	BL	/	
		Hg	BL	/	
		Cr (Cr(VI))	OL*	N.D(Negative)	
		Br(PBBs&PBDEs)	/	/	
48	White plastic	Pb	BL	/	PASS
		Cd	BL	/	
		Hg	BL	/	
		Cr (Cr(VI))	BL	/	
		Br(PBBs&PBDEs)	BL	/	

# Verification Report

Report No.ECL03I000733001

Page 15 of 25

Sample No.	Tested Sample/Part Description	Tested Items	XRF Screening Test	Chemical Test (mg/kg)	Conclusion
49	White plastic	Pb	BL	/	PASS
		Cd	BL	/	
		Hg	BL	/	
		Cr (Cr(VI))	BL	/	
		Br(PBBs&PBDEs)	BL	/	
50	Silver-grey metal	Pb	BL	/	PASS
		Cd	BL	/	
		Hg	BL	/	
		Cr (Cr(VI))	X*	N.D(Negative)	
		Br(PBBs&PBDEs)	/	/	
51	White cloth	Pb	BL	/	PASS
		Cd	BL	/	
		Hg	BL	/	
		Cr (Cr(VI))	BL	/	
		Br(PBBs&PBDEs)	BL	/	
52	Yellow plastic	Pb	BL	/	PASS
		Cd	BL	/	
		Hg	BL	/	
		Cr (Cr(VI))	BL	/	
		Br(PBBs&PBDEs)	BL	/	
53	Cupreous enamelled wire	Pb	BL	/	PASS
		Cd	BL	/	
		Hg	BL	/	
		Cr (Cr(VI))	BL	/	
		Br(PBBs&PBDEs)	BL	/	
54	White plastic	Pb	BL	/	PASS
		Cd	BL	/	
		Hg	BL	/	
		Cr (Cr(VI))	BL	/	
		Br(PBBs&PBDEs)	BL	/	

# Verification Report

Report No.ECL03I000733001

Page 16 of 25

Sample No.	Tested Sample/Part Description	Tested Items	XRF Screening Test	Chemical Test (mg/kg)	Conclusion
55	Silvery metal	Pb	BL	/	PASS
		Cd	BL	/	
		Hg	BL	/	
		Cr (Cr(VI))	BL	/	
		Br(PBBs&PBDEs)	/	/	
56	White plastic casing	Pb	BL	/	PASS
		Cd	BL	/	
		Hg	BL	/	
		Cr (Cr(VI))	BL	/	
		Br(PBBs&PBDEs)	BL	/	
57	White plastic casing	Pb	BL	/	PASS
		Cd	BL	/	
		Hg	BL	/	
		Cr (Cr(VI))	BL	/	
		Br(PBBs&PBDEs)	BL	/	
58	Yellow wire skin	Pb	BL	/	PASS
		Cd	BL	/	
		Hg	BL	/	
		Cr (Cr(VI))	BL	/	
		Br(PBBs&PBDEs)	BL	/	
59	Red wire skin	Pb	BL	/	PASS
		Cd	BL	/	
		Hg	BL	/	
		Cr (Cr(VI))	BL	/	
		Br(PBBs&PBDEs)	BL	/	
60.1	Silvery plating	Pb	BL	/	PASS
		Cd	BL	/	
		Hg	BL	/	
		Cr (Cr(VI))	BL	/	
		Br(PBBs&PBDEs)	/	/	

# Verification Report

Report No.ECL03I000733001

Page 17 of 25

Sample No.	Tested Sample/Part Description	Tested Items	XRF Screening Test	Chemical Test (mg/kg)	Conclusion
60.2	Metal base	Pb	BL	/	PASS
		Cd	BL	/	
		Hg	BL	/	
		Cr (Cr(VI))	BL	/	
		Br(PBBs&PBDEs)	/	/	
61	Black wire skin	Pb	BL	/	PASS
		Cd	BL	/	
		Hg	BL	/	
		Cr (Cr(VI))	BL	/	
		Br(PBBs&PBDEs)	BL	/	
62	Silvery metal	Pb	BL	/	PASS
		Cd	BL	/	
		Hg	BL	/	
		Cr (Cr(VI))	OL*	N.D(Negative)	
		Br(PBBs&PBDEs)	/	/	
63	Silvery metal	Pb	BL	/	PASS
		Cd	BL	/	
		Hg	BL	/	
		Cr (Cr(VI))	OL*	N.D(Negative)	
		Br(PBBs&PBDEs)	/	/	
64	Yellow grease	Pb	BL	/	PASS
		Cd	BL	/	
		Hg	BL	/	
		Cr (Cr(VI))	BL	/	
		Br(PBBs&PBDEs)	BL	/	
65	Silvery metal	Pb	BL	/	PASS
		Cd	BL	/	
		Hg	BL	/	
		Cr (Cr(VI))	BL	/	
		Br(PBBs&PBDEs)	/	/	

# Verification Report

Report No.ECL03I000733001

Page 18 of 25

Sample No.	Tested Sample/Part Description	Tested Items	XRF Screening Test	Chemical Test (mg/kg)	Conclusion
66	Silvery metal	Pb	BL	/	PASS
		Cd	BL	/	
		Hg	BL	/	
		Cr (Cr(VI))	OL*	N.D(Negative)	
		Br(PBBs&PBDEs)	/	/	
67	Black plastic	Pb	BL	/	PASS
		Cd	BL	/	
		Hg	BL	/	
		Cr (Cr(VI))	BL	/	
		Br(PBBs&PBDEs)	BL	/	
68	Silvery metal	Pb	BL	/	PASS
		Cd	BL	/	
		Hg	BL	/	
		Cr (Cr(VI))	BL	/	
		Br(PBBs&PBDEs)	/	/	
69.1	Black coating	Pb	BL	/	PASS
		Cd	BL	/	
		Hg	BL	/	
		Cr (Cr(VI))	BL	/	
		Br(PBBs&PBDEs)	BL	/	
69.2	Metal base	Pb	BL	/	PASS
		Cd	BL	/	
		Hg	BL	/	
		Cr (Cr(VI))	BL	/	
		Br(PBBs&PBDEs)	/	/	
70	Red solid	Pb	BL	/	PASS
		Cd	BL	/	
		Hg	BL	/	
		Cr (Cr(VI))	BL	/	
		Br(PBBs&PBDEs)	BL	/	

# Verification Report

Report No.ECL03I000733001

Page 19 of 25

**Remark:** -MDL = Method Detection Limit

-N.D. = Not Detected (<MDL)

-mg/kg = ppm = parts per million

-Negative = Absence of Cr (VI). The Cr (VI) concentration detected in the boiling water extraction solution is less than 0.1µg/cm<sup>2</sup>

-BL = Under the XRF screening limit

-OL = Further chemical test will be conducted while the result is above the screening limit.

-X= The symbol "X" marks the region where further investigation is necessary.

Limit of Directive 2011/65/EU: Pb < 1000 mg/kg, Cd <100 mg/kg, Hg < 1000 mg/kg,

Cr(VI) : < 1000 mg/kg, PBBs < 1000mg/kg, PBDEs < 1000mg/kg

**The test result(s) of sample No.17.2,18.2 are calculated based on the sample dry weight.**

**1.The screening results are only used for reference.**

**2.When conducting the test for PBBs&PBDEs, XRF was introduced to screen Br**

**Exclusively; When conducting the test for Hexavalent Chromium, XRF was**

**introduced to screen Chromium exclusively.**

**3.\*Further chemical test will be conducted while result is above the screening limit.**

## Test Method

### A.Screening test by XRF spectroscopy

**XRF screening limits in mg/kg for regulated elements according to IEC62321-3-1:2013 Ed 1.0**

Element	IEC62321-3-1:2013 Ed 1.0 (unit:mg/kg)		MDL	
	Polymers and metals	Composite material	Polymers	Other material
Pb	BL≤700-3σ <X <1300 +3σ≤ OL	BL≤500 -3σ<X <1500 +3σ≤OL	10 mg/kg	50 mg/kg
Cd	BL≤70 -3σ<X <130 +3σ≤ OL	LOD≤50 -3σ<X <150 +3σ≤OL	10 mg/kg	50 mg/kg
Hg	BL≤700 -3σ<X <1300 +3σ≤ OL	BL≤500 -3σ<X <1500+3σ≤OL	10 mg/kg	50 mg/kg
Cr	BL≤700 -3σ<OL	BL≤500 -3σ<OL	10 mg/kg	50 mg/kg
Br	BL≤300 -3σ<OL	BL≤250 -3σ<OL	10 mg/kg	50 mg/kg

**Remark:** -BL = Under the XRF screening limit

-OL = Further chemical test will be conducted while result is above the screening limit.

-X= The symbol "X" marks the region where further investigation is necessary.

-3 σ = The reproducibility of analytical instruments

-LOD= Detection limit

# Verification Report

Report No.ECL03I000733001

Page 20 of 25

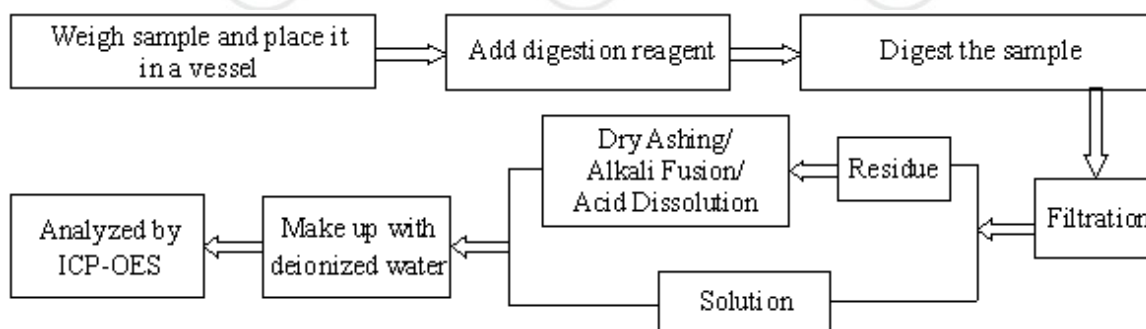
## B.Chemical Test

Tested Item(s)	Test Method	Measured Equipment (s)	MDL
Lead (Pb)	IEC 62321-5:2013 Ed.1.0	ICP-OES	2 mg/kg
	Refer to IEC 62321-5:2013 Ed.1.0		
Cadmium (Cd)	IEC 62321-5:2013 Ed.1.0	ICP-OES	2 mg/kg
	Refer to IEC 62321-5:2013 Ed.1.0		
Mercury (Hg)	IEC 62321-4:2013 Ed.1.0	ICP-OES	2 mg/kg
	Refer to IEC 62321-4:2013 Ed.1.0		
Hexavalent Chromium Cr(VI)	IEC 62321-7-1:2015	UV-Vis	0.02µg/cm <sup>2</sup>
	IEC 62321:2008 Ed.1 Annex C	UV-Vis	2 mg/kg
Polybrominated Biphenyls (PBBs)	IEC 62321-6:2015	GC-MS	5 mg/kg
Polybrominated Diphenyl Ethers (PBDEs)	IEC 62321-6:2015	GC-MS	5 mg/kg

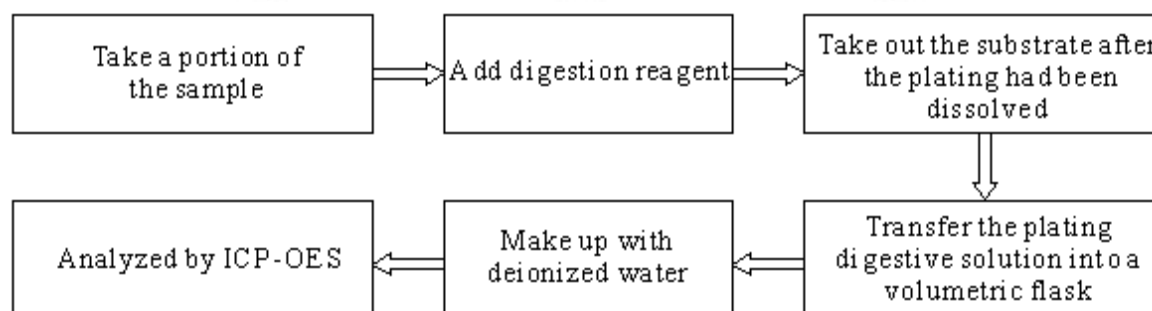
## Test Process

### 1). Pb/Cd

IEC 62321-5:2013 Ed.1.0



Refer to IEC 62321-5:2013 Ed.1.0



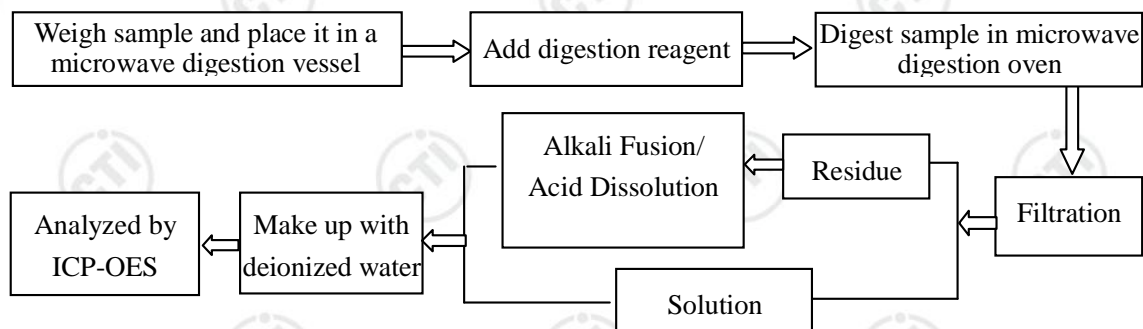
# Verification Report

Report No.ECL03I000733001

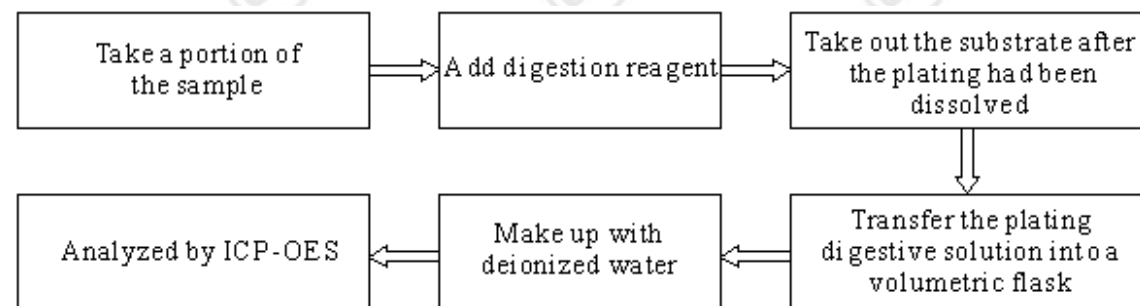
Page 21 of 25

## 2).Hg

IEC 62321-4:2013 Ed.1.0

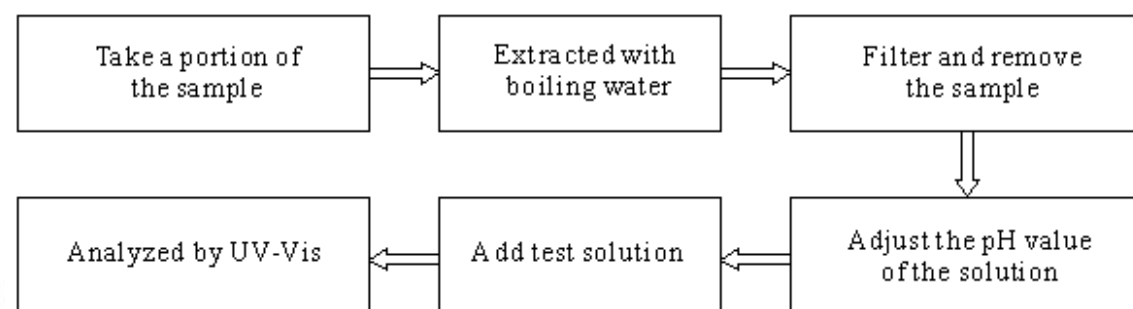


Refer to IEC 62321-4:2013 Ed.1.0

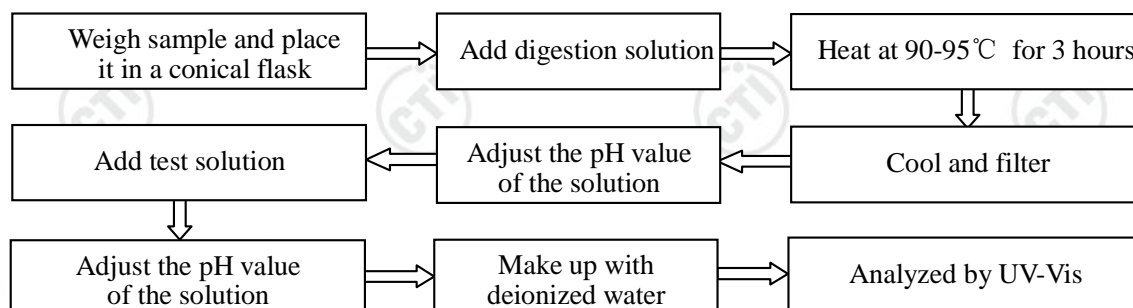


## 3). Chromium(VI)

IEC 62321-7-1:2015



IEC 62321:2008 Ed.1 Annex C

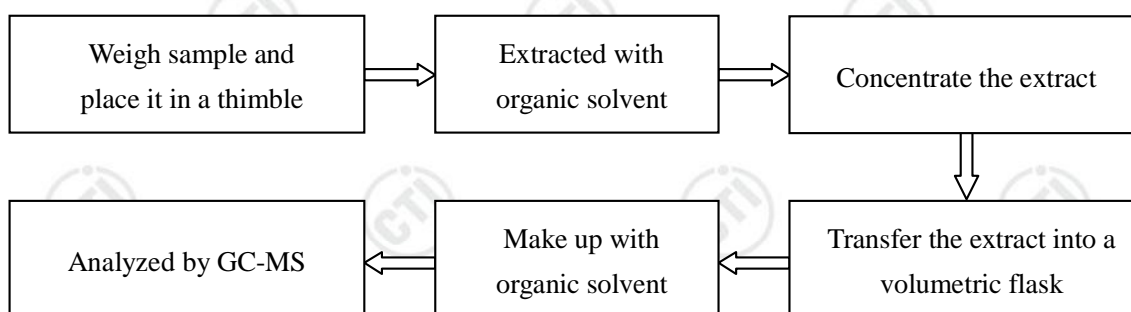


# Verification Report

Report No.ECL03I000733001

Page 22 of 25

## 4).PBBs/PBDEs

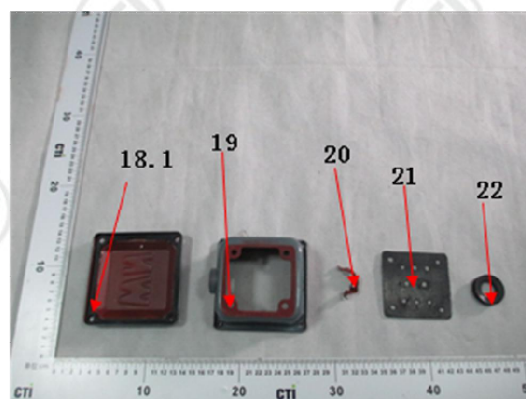
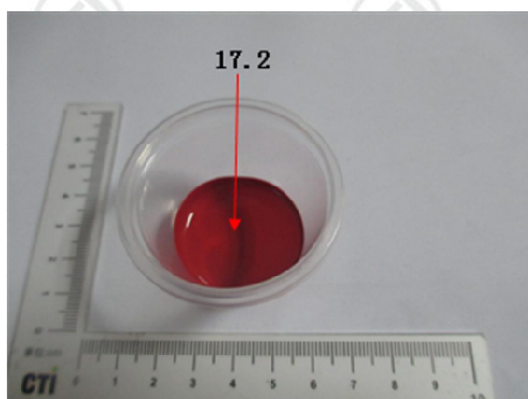
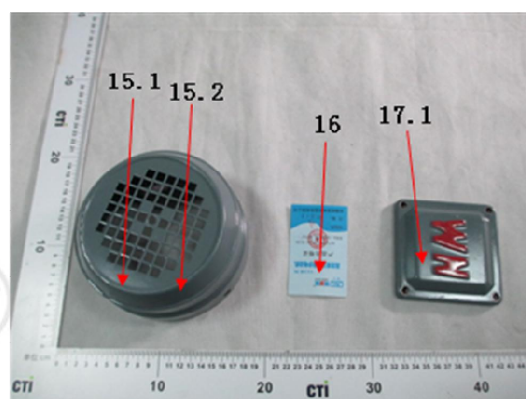
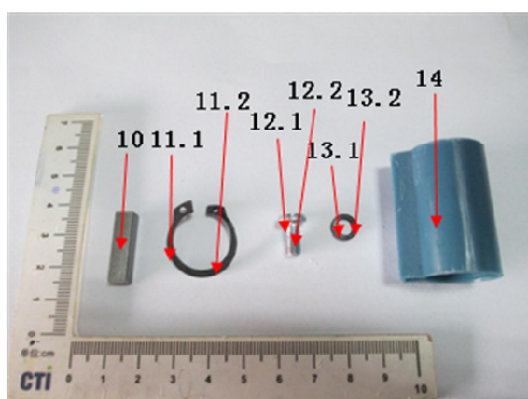
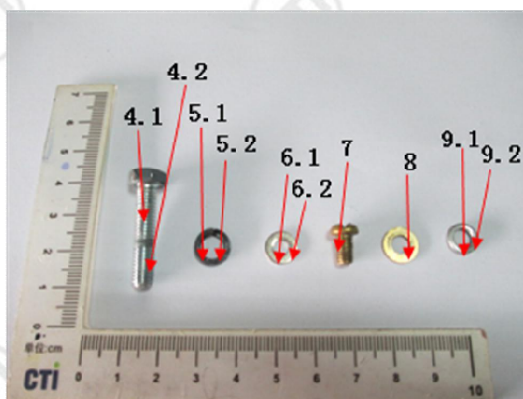
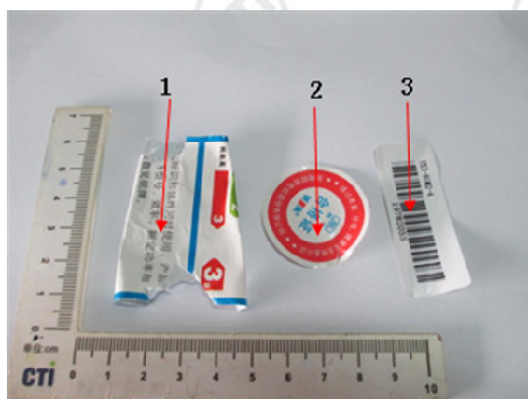


# Verification Report

Report No.ECL03I000733001

Page 23 of 25

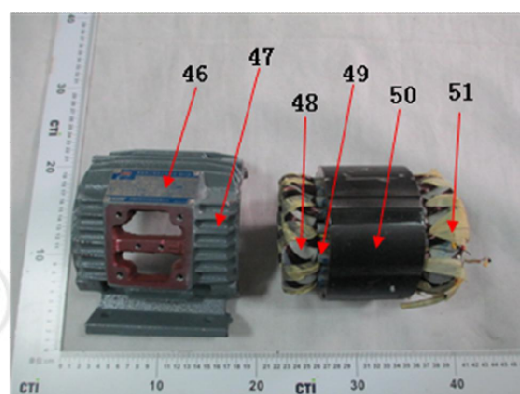
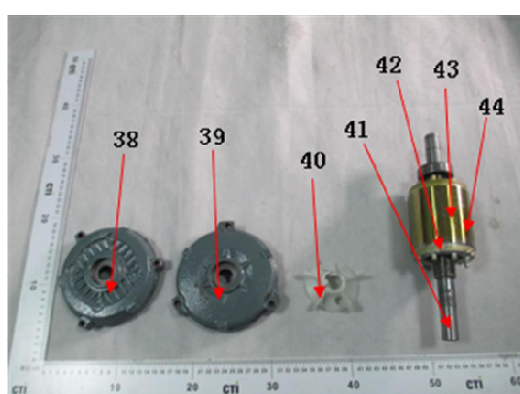
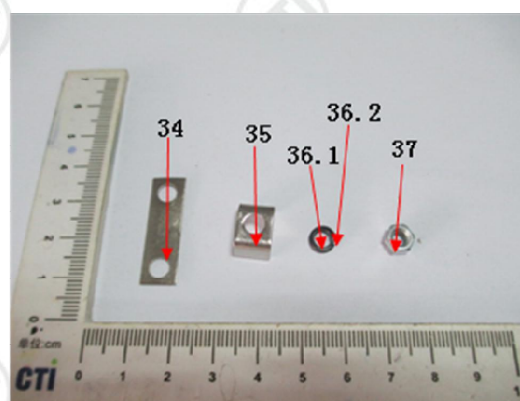
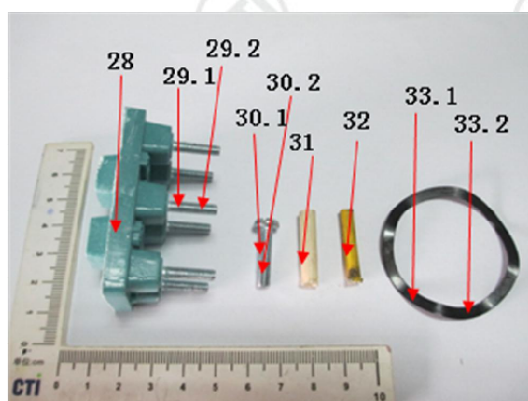
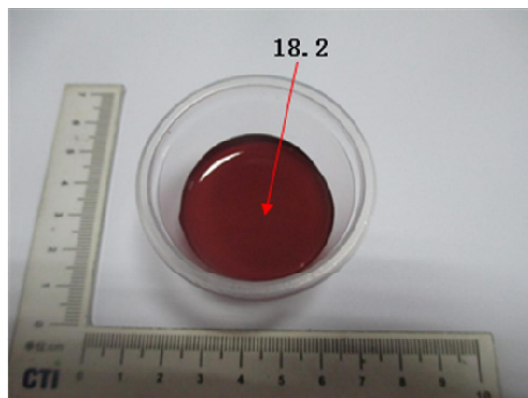
## Photo(s) of the tested component(s)



# Verification Report

Report No.ECL03I000733001

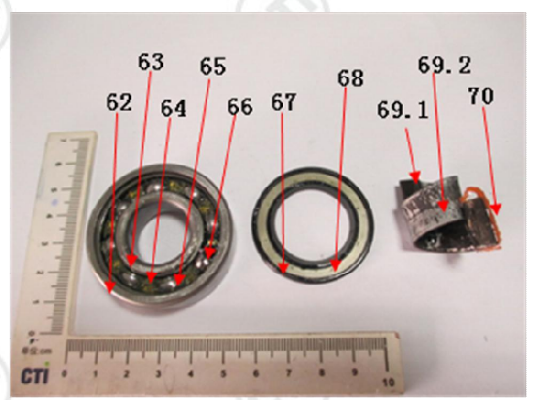
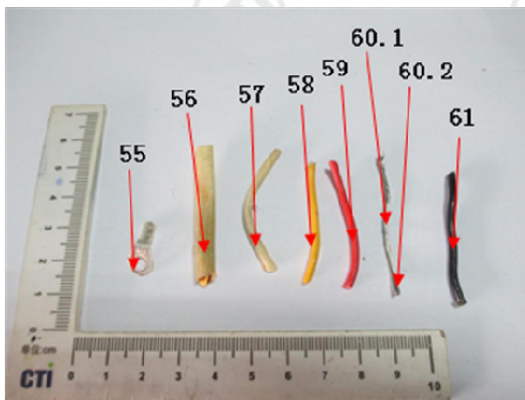
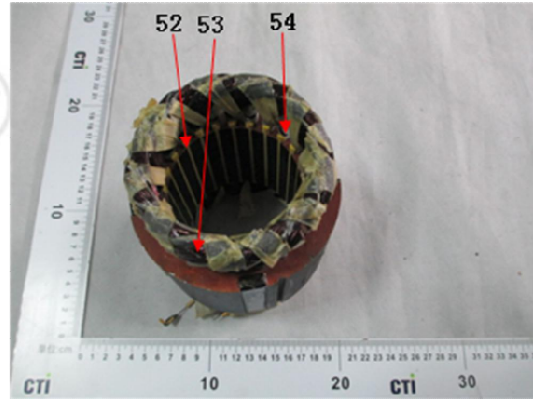
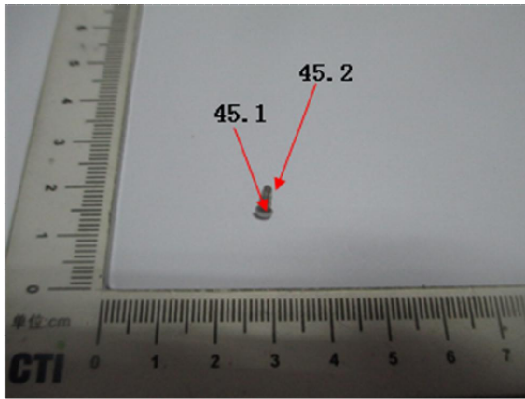
Page 24 of 25



# Verification Report

Report No.ECL03I000733001

Page 25 of 25



\*\*\* End of report \*\*\*

The test report is effective only with both signature and specialized stamp. The result(s) shown in this report refer only to the sample(s) tested. Without written approval of CTI, this report can't be reproduced except in full.