

YFB3 Series High Efficiency Dust Explosion-proof Three-phase Induction Motors



- Frame sizes: 80 to 355 Rated output: 0.18 to 315kW
- Voltage: 380V,660V,380/660V Frequency: 50Hz or 60 Hz
- Duty Cycle: S1 Insulation class: F
- Degree of protection: IP65 T135°C
- Efficiency levels: IE3 Ex-code: Ex tD A21

Applications: Grain storage facilities, food processing, textile mill, chemical plant and other applications where hazardous fumes or dust may be present area.

Ex-code: Ex tD A21 IP65 T135°C

Temperature Group: T1~T4

Features: Limit the maximum surface temperature and have IP65 protection class of the enclosure to ensure limit the dust go inside the motor.

Performance Data

380V 50Hz

Model	Output kW	FLA	RPM	Eff. $\eta\%$	Power Factor	FLT N.m	$\frac{LRT}{FLT} \frac{Tst}{TN}$	$\frac{LRA}{FLA} \frac{Ist}{IN}$	$\frac{BDT}{FLT} \frac{Tmax}{TN}$	dB(A)
Synchronous speed 3000 r/min										
YFB3-80M1-2	0.75	1.7	2870	80.7	0.83	2.5	2.2	7.0	2.3	62
YFB3-80M2-2	1.1	2.4	2875	82.7	0.83	3.7	2.2	7.3	2.3	62
YFB3-90S-2	1.5	3.2	2880	84.2	0.84	5.0	2.2	7.6	2.3	67
YFB3-90L-2	2.2	4.6	2880	85.9	0.85	7.3	2.2	7.6	2.3	67
YFB3-100L-2	3	6.0	2880	87.1	0.87	10.0	2.2	7.8	2.3	74
YFB3-112M-2	4	7.8	2915	88.1	0.88	13.1	2.2	8.3	2.3	77
YFB3-132S1-2	5.5	10.6	2935	89.2	0.88	17.9	2.0	8.3	2.3	79
YFB3-132S2-2	7.5	14.4	2930	90.1	0.88	24.4	2.0	7.9	2.3	79
YFB3-160M1-2	11	20.6	2950	91.2	0.89	35.6	2.0	8.1	2.3	81
YFB3-160M2-2	15	27.9	2945	91.9	0.89	48.6	2.0	8.1	2.3	81
YFB3-160L-2	18.5	34.2	2945	92.4	0.89	60.0	2.0	8.2	2.3	81
YFB3-180M-2	22	40.5	2950	92.7	0.89	71.2	2.0	8.2	2.3	83
YFB3-200L1-2	30	54.9	2965	93.3	0.89	96.6	2.0	7.6	2.3	84
YFB3-200L2-2	37	67.4	2965	93.7	0.89	119	2.0	7.6	2.3	84
YFB3-225M-2	45	80.8	2965	94.0	0.90	145	2.0	7.7	2.3	86
YFB3-250M-2	55	98.5	2975	94.3	0.90	177	2.0	7.7	2.3	89
YFB3-280S-2	75	134	2975	94.7	0.90	241	1.8	7.1	2.3	91
YFB3-280M-2	90	160	2975	95.0	0.90	289	1.8	7.1	2.3	91
YFB3-315S-2	110	195	2985	95.2	0.90	352	1.8	7.1	2.3	92
YFB3-315M-2	132	234	2985	95.4	0.90	422	1.8	7.1	2.3	92
YFB3-315L1-2	160	279	2985	95.6	0.91	512	1.8	7.2	2.3	92
YFB3-315L2-2	200	349	2985	95.8	0.91	640	1.8	7.2	2.2	92
YFB3-355S1-2	185	323	2985	95.6	0.91	592	1.8	7.2	2.3	100

Performance Data

380V 50Hz

Model	Output kW	FLA	RPM	Eff. $\eta\%$	Power Factor	FLT N.m	$\frac{LRT}{FLT} \frac{T_{st}}{T_N}$	$\frac{LRA}{FLA} \frac{I_{st}}{I_N}$	$\frac{BDT}{FLT} \frac{T_{max}}{T_N}$	dB(A)
Synchronous speed 3000 r/min										
YFB3-355S2-2	200	349	2985	95.8	0.91	640	1.8	7.2	2.2	100
YFB3-355M1-2	220	383	2985	95.8	0.91	704	1.8	7.2	2.2	100
YFB3-355M2-2	250	436	2985	95.8	0.91	800	1.6	7.2	2.2	100
YFB3-355L1-2	280	488	2985	95.8	0.91	896	1.6	7.2	2.2	100
YFB3-355L2-2	315	549	2985	95.8	0.91	1008	1.6	7.2	2.2	100
Synchronous speed 1500 r/min										
YFB3-80M1-4	0.55	1.4	1430	80.6	0.75	3.7	2.3	6.5	2.3	56
YFB3-80M2-4	0.75	1.8	1430	82.5	0.75	5.0	2.3	6.6	2.3	56
YFB3-90S-4	1.1	2.6	1430	84.1	0.76	7.4	2.3	6.8	2.3	59
YFB3-90L-4	1.5	3.5	1430	85.3	0.77	10.0	2.3	7.0	2.3	59
YFB3-100L1-4	2.2	4.8	1440	86.7	0.81	14.6	2.3	7.6	2.3	64
YFB3-100L2-4	3	6.3	1440	87.7	0.82	19.9	2.3	7.6	2.3	64
YFB3-112M-4	4	8.4	1455	88.6	0.82	26.3	2.2	7.8	2.3	65
YFB3-132S-4	5.5	11.2	1465	89.6	0.83	35.9	2.0	7.9	2.3	71
YFB3-132M-4	7.5	15.0	1465	90.4	0.84	48.9	2.0	7.5	2.3	71
YFB3-160M-4	11	21.5	1470	91.4	0.85	71.5	2.0	7.7	2.3	73
YFB3-160L-4	15	28.8	1470	92.1	0.86	97.4	2.0	7.8	2.3	73
YFB3-180M-4	18.5	35.3	1470	92.6	0.86	120	2.0	7.8	2.3	76
YFB3-180L-4	22	41.8	1470	93.0	0.86	143	2.0	7.8	2.3	76
YFB3-200L-4	30	56.6	1475	93.6	0.86	194	2.0	7.3	2.3	76
YFB3-225S-4	37	69.6	1480	93.9	0.86	239	2.0	7.4	2.3	78
YFB3-225M-4	45	84.4	1480	94.2	0.86	290	2.0	7.4	2.3	78
YFB3-250M-4	55	103	1485	94.6	0.86	354	2.0	7.4	2.3	79
YFB3-280S-4	75	136	1490	95.0	0.88	481	2.0	6.7	2.3	80
YFB3-280M-4	90	163	1490	95.2	0.88	577	2.0	6.9	2.3	80
YFB3-315S-4	110	197	1490	95.4	0.89	705	2.0	7.0	2.2	88
YFB3-315M-4	132	236	1490	95.6	0.89	846	2.0	7.0	2.2	88
YFB3-315L1-4	160	285	1490	95.8	0.89	1026	2.0	7.1	2.2	88
YFB3-315L2-4	200	352	1490	96.0	0.90	1282	2.0	7.1	2.2	88
YFB3-355S1-4	185	330	1490	95.8	0.89	1186	2.0	7.1	2.2	95
YFB3-355S2-4	200	352	1490	96.0	0.90	1282	2.0	7.1	2.2	95
YFB3-355M1-4	220	387	1490	96.0	0.90	1410	2.0	7.1	2.2	95
YFB3-355M2-4	250	440	1495	96.0	0.90	1597	2.0	7.1	2.2	95
YFB3-355L1-4	280	492	1495	96.0	0.90	1789	2.0	7.1	2.2	95
YFB3-355L2-4	315	554	1495	96.0	0.90	2012	2.0	7.1	2.2	95
Synchronous speed 1000 r/min										
YFB3-80M1-6	0.37	1.2	910	68.0	0.70	3.9	1.9	5.5	2.1	54
YFB3-80M2-6	0.55	1.6	925	72.0	0.71	5.7	1.9	5.8	2.1	54
YFB3-90S-6	0.75	2.0	945	78.9	0.71	7.6	2.0	6.0	2.1	57

Performance Data

380V 50Hz

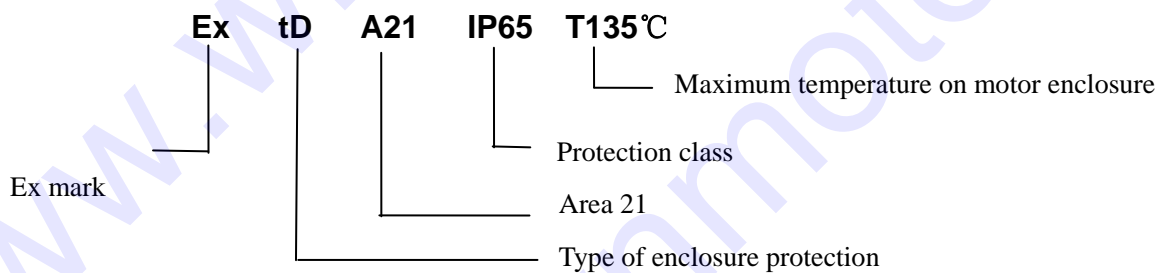
Model	Output kW	FLA	RPM	Eff. $\eta\%$	Power Factor	FLT N.m	$\frac{LRT}{FLT} \frac{Tst}{T_N}$	$\frac{LRA}{FLA} \frac{Ist}{I_N}$	$\frac{BDT}{FLT} \frac{Tmax}{T_N}$	dB(A)
Synchronous speed 1000 r/min										
YFB3-90L-6	1.1	2.8	950	81.0	0.73	11.1	2.0	6.0	2.1	57
YFB3-100L-6	1.5	3.8	950	82.5	0.73	15.1	2.0	6.5	2.1	61
YFB3-112M-6	2.2	5.4	965	84.3	0.74	21.8	2.0	6.6	2.1	65
YFB3-132S-6	3	7.2	975	85.6	0.74	29.4	1.9	6.8	2.1	69
YFB3-132M1-6	4	9.5	975	86.8	0.74	39.2	1.9	6.8	2.1	69
YFB3-132M2-6	5.5	12.7	975	88.0	0.75	53.9	1.9	7.0	2.1	69
YFB3-160M-6	7.5	16.2	980	89.1	0.79	73.1	2.0	7.0	2.1	70
YFB3-160L-6	11	23.1	980	90.3	0.80	107	2.0	7.2	2.1	70
YFB3-180L-6	15	30.9	980	91.2	0.81	146	1.9	7.3	2.1	73
YFB3-200L1-6	18.5	37.8	985	91.7	0.81	179	1.9	7.3	2.1	73
YFB3-200L2-6	22	44.8	985	92.2	0.81	213	1.9	7.4	2.1	73
YFB3-225M-6	30	59.1	985	92.9	0.83	291	1.9	6.9	2.1	74
YFB3-250M-6	37	71.7	985	93.3	0.84	359	1.9	7.1	2.1	76
YFB3-280S-6	45	85.8	990	93.7	0.85	434	1.9	7.3	2.0	78
YFB3-280M-6	55	103	990	94.1	0.86	531	1.9	7.3	2.0	78
YFB3-315S-6	75	143	990	94.6	0.84	723	1.9	6.6	2.0	83
YFB3-315M-6	90	170	990	94.9	0.85	868	1.9	6.7	2.0	83
YFB3-315L1-6	110	207	990	95.1	0.85	1061	1.9	6.7	2.0	83
YFB3-315L2-6	132	244	990	95.4	0.86	1273	1.9	6.8	2.0	83
YFB3-355S-6	160	296	990	95.6	0.86	1543	1.9	6.8	2.0	85
YFB3-355M1-6	185	342	995	95.6	0.86	1776	1.9	6.8	2.0	85
YFB3-355M2-6	200	365	995	95.8	0.87	1920	1.9	6.8	2.0	85
YFB3-355L1-6	220	401	995	95.8	0.87	2112	1.9	6.8	2.0	85
YFB3-355L2-6	250	456	995	95.8	0.87	2399	1.9	6.8	2.0	85
Synchronous speed 750 r/min										
YFB3-80M1-8	0.18	0.80	700	56.0	0.61	2.5	1.8	3.3	1.9	52
YFB3-80M2-8	0.25	1.1	700	59.0	0.61	3.4	1.8	3.3	1.9	52
YFB3-90S-8	0.37	1.4	695	66.0	0.61	5.1	1.8	4.0	2.0	56
YFB3-90L-8	0.55	2.0	695	70.0	0.61	7.6	1.8	4.0	2.0	56
YFB3-100L1-8	0.75	2.3	705	73.5	0.67	10.2	1.8	4.0	2.0	59
YFB3-100L2-8	1.1	3.2	705	76.5	0.69	14.9	1.8	5.0	2.0	59
YFB3-112M-8	1.5	4.2	715	77.5	0.70	20.0	1.8	5.0	2.0	61
YFB3-132S-8	2.2	5.9	730	80.0	0.71	28.8	1.8	6.0	2.2	64
YFB3-132M-8	3	7.6	730	82.5	0.73	39.2	1.8	6.0	2.2	64
YFB3-160M1-8	4	9.8	725	85.0	0.73	52.7	1.9	6.0	2.2	68
YFB3-160M2-8	5.5	13.1	725	86.0	0.74	72.4	1.9	6.0	2.2	68
YFB3-160L-8	7.5	17.4	730	87.5	0.75	98.1	1.9	6.0	2.2	68
YFB3-180L-8	11	25.0	725	89.0	0.75	145	1.9	6.5	2.2	70
YFB3-200L-8	15	33.2	730	90.4	0.76	196	2.0	6.6	2.2	73
YFB3-225S-8	18.5	40.6	735	91.2	0.76	240	2.0	6.6	2.2	73

Performance Data

380V 50Hz

Model	Output kW	FLA	RPM	Eff. $\eta\%$	Power Factor	FLT N.m	$\frac{LRT}{FLT} \frac{Tst}{T_N}$	$\frac{LRA}{FLA} \frac{Ist}{I_N}$	$\frac{BDT}{FLT} \frac{Tmax}{T_N}$	dB(A)
Synchronous speed 750 r/min										
YFB3-225M-8	22	46.8	735	91.5	0.78	286	2.0	6.6	2.2	73
YFB3-250M-8	30	62.6	735	92.2	0.79	390	1.9	6.5	2.0	75
YFB3-280S-8	37	76.5	740	93.0	0.79	478	1.8	6.6	2.0	76
YFB3-280M-8	45	92.6	740	93.5	0.79	581	1.8	6.6	2.0	76
YFB3-315S-8	55	110	740	93.8	0.81	710	1.8	6.6	2.0	82
YFB3-315M-8	75	150	740	94.0	0.81	968	1.8	6.2	2.0	82
YFB3-315L1-8	90	176	740	94.5	0.82	1161	1.8	6.4	2.0	82
YFB3-315L2-8	110	215	740	94.8	0.82	1420	1.8	6.4	2.0	82
YFB3-355S-8	132	257	745	95.0	0.82	1692	1.8	6.4	2.0	90
YFB3-355M-8	160	312	745	95.0	0.82	2051	1.8	6.4	2.0	90
YFB3-355L1-8	185	360	745	95.2	0.82	2371	1.8	6.4	2.0	90
YFB3-355L2-8	200	385	745	95.2	0.83	2564	1.8	6.4	2.0	90
Synchronous speed 600 r/min										
YFB3-315S-10	45	99.0	590	92.0	0.75	728	1.5	6.2	2.0	90
YFB3-315M-10	55	120	590	92.5	0.75	890	1.5	6.2	2.0	90
YFB3-315L1-10	75	161	590	93.0	0.76	1214	1.5	5.8	2.0	90
YFB3-315L2-10	90	190	590	93.4	0.77	1457	1.5	5.9	2.0	90
YFB3-355S-10	90	190	590	93.4	0.77	1457	1.5	5.9	2.0	90
YFB3-355M1-10	110	228	595	93.8	0.78	1766	1.3	6.0	2.0	90
YFB3-355M2-10	132	273	595	94.2	0.78	2119	1.3	6.0	2.0	90
YFB3-355L1-10	160	331	595	94.2	0.78	2568	1.3	6.0	2.0	90
YFB3-355L2-10	185	383	595	94.2	0.78	2969	1.3	6.0	2.0	90

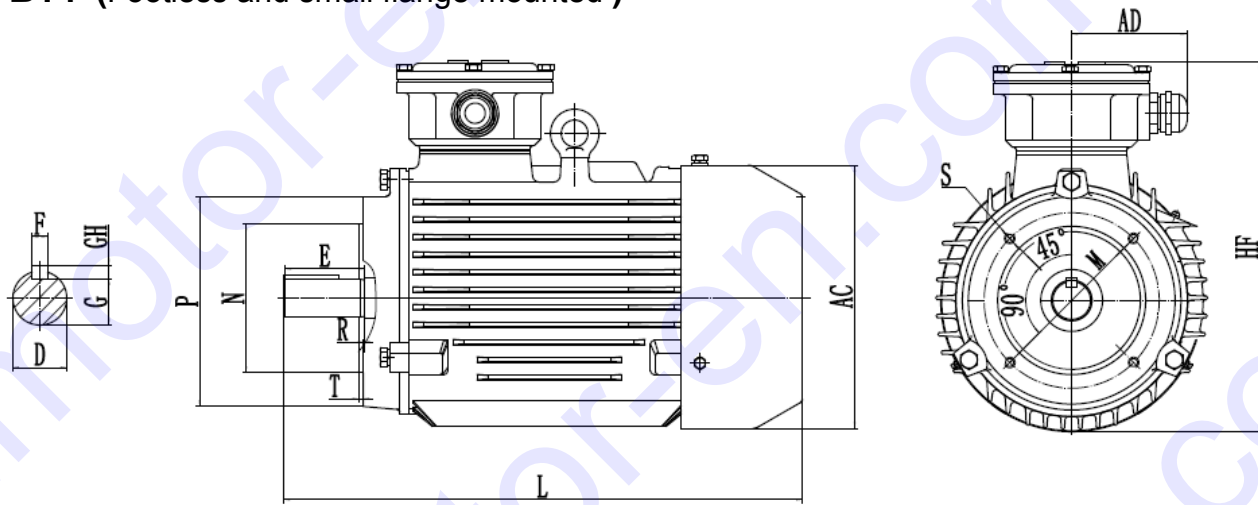
Illustration of the Explosion-proof mark



Dimensions & Mounting

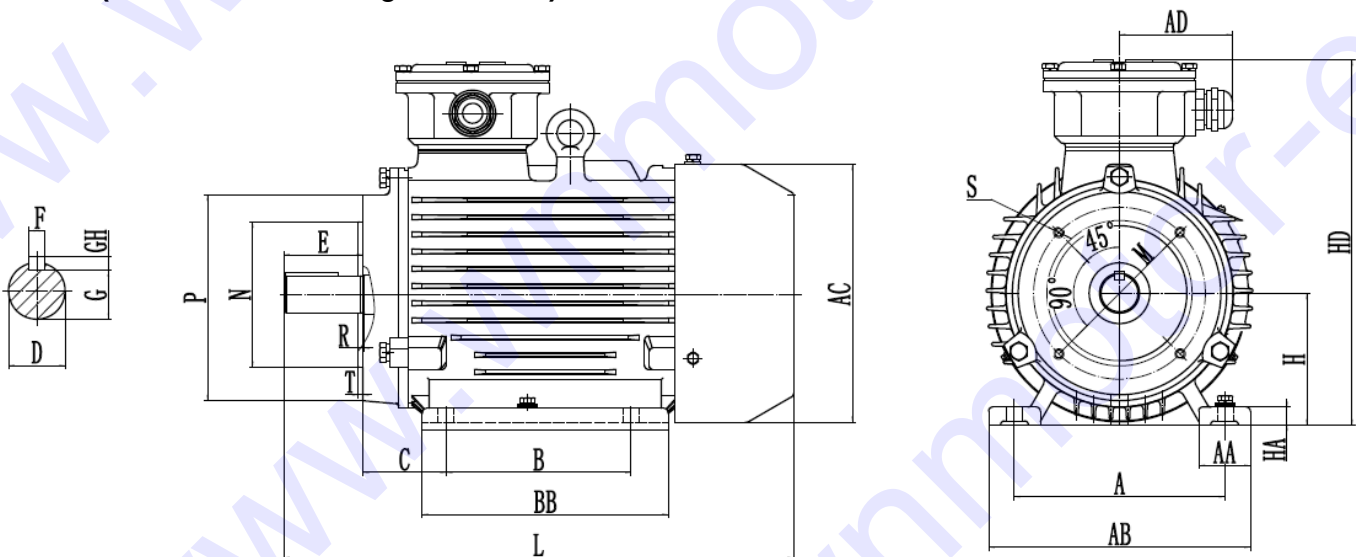
mm

B14 (Footless and small flange mounted)



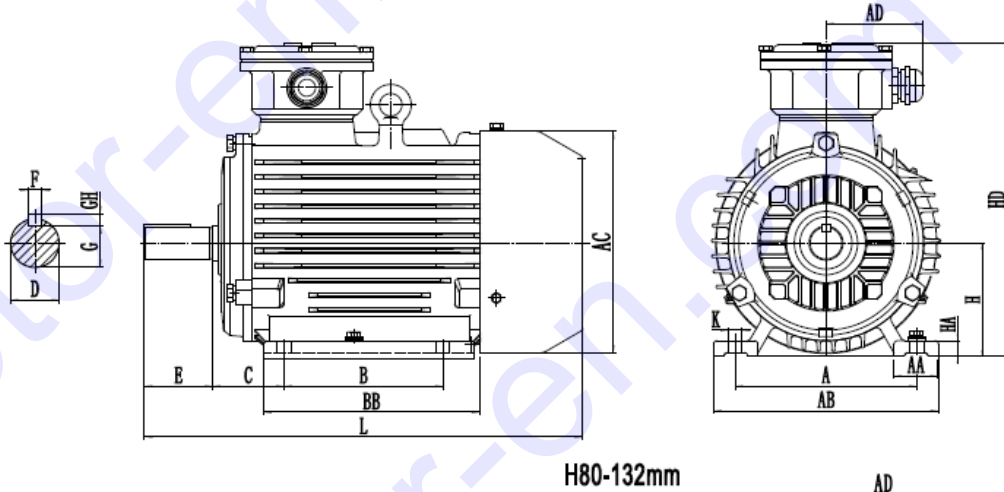
Frame	Poles	Mounting Dimension											Overall Dimension			
		D	E	F	G	M	N	P	R	S	T	AC	AD	HF	L	
80M	2,4,6,8	19	40	6	15.5	100	80	120	0	4-M6	3	165	95	240	295	
90S	2,4,6,8	24	50	8	20	115	95	140	0	4-M8	3	180	95	250	345	
90L	2,4,6,8														385	
100L	2,4,6,8	28	60	8	24	130	110	160	0	4-M8	3.5	205	95	280	390	
112M	2,6,8	28	60	8	24	130	110	160	0	4-M8	3.5	225	115	315	425	
	4														455	

B34 (Foot and small flange mounted)

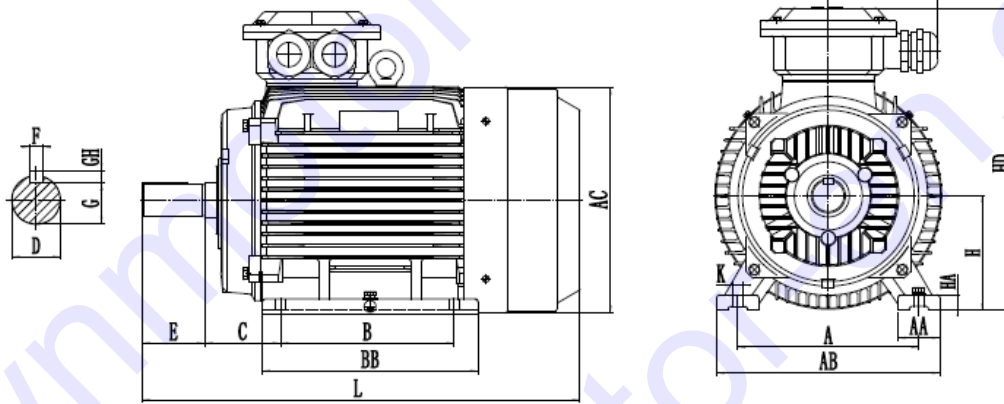


Frame	Poles	Mounting Dimension															Overall Dimension							
		A	B	C	D	E	F	G	H	K	M	N	P	R	S	T	AA	BB	HA	AB	AC	AD	HD	L
80M	2,4,6,8	125	100	50	19	40	6	15.5	80	10	100	80	120	0	4-M6	3	32	135	10	160	165	95	240	295
90S	2,4,6,8	140	100	56	24	50	8	20	90	10	115	95	140	0	4-M8	3	34	170	12	180	180	95	255	345
90L	2,4,6,8		210															385						
100L	2,4,6,8	160	140	63	28	60	8	24	100	12	130	110	160	0	4-M8	3.5	39	186	14	200	205	95	285	390
112M	2,6,8	190	140	70	28	60	8	24	112	12	130	110	160	0	4-M8	3.5	45	200	14	230	225	115	320	425
	4																	230						455

B3 (Horizontal foot mounted only)



H80-132mm



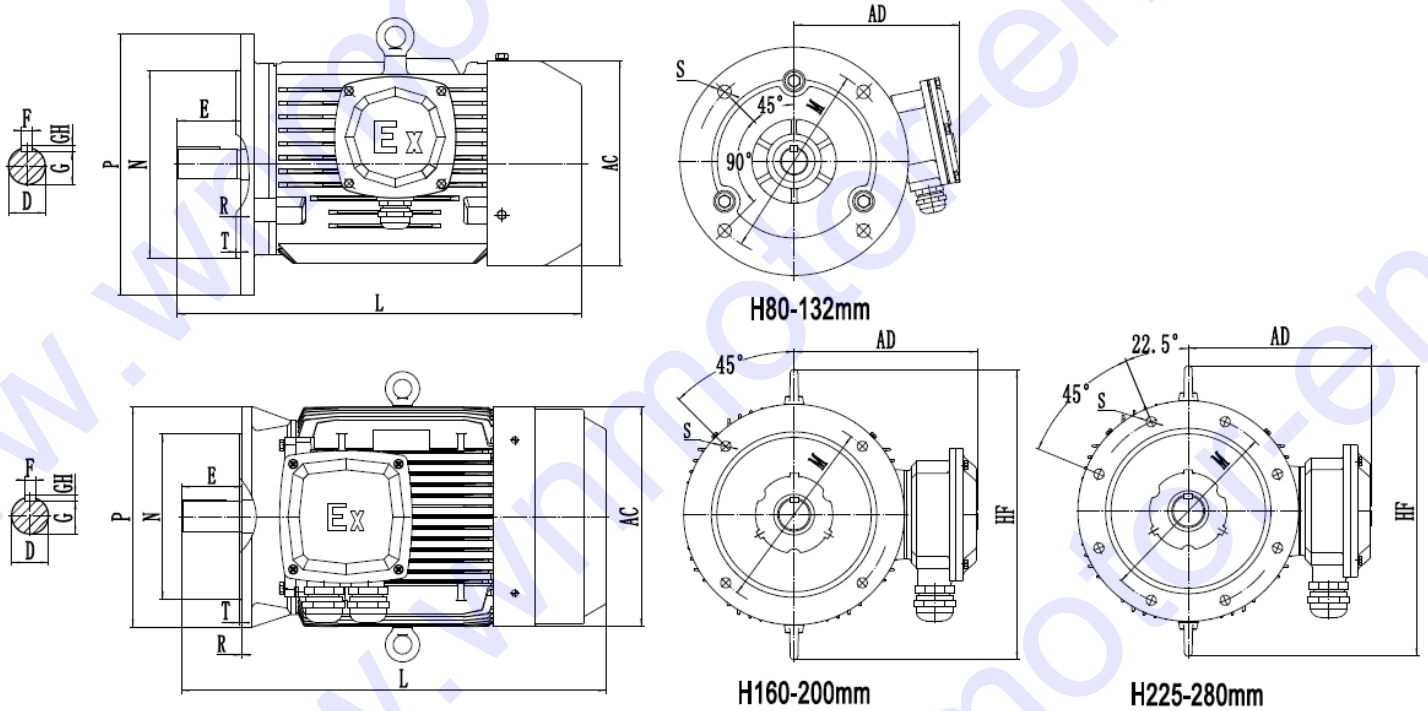
H160-355mm

Frame	Pole	Mounting Dimension									Overall Dimension							
		A	B	C	D	E	F	G	H	K	AA	BB	HA	AB	AC	AD	HD	L
80M	2.4.6.8	125	100	50	19	40	6	15.5	80	10	32	135	10	160	165	95	240	295
90S	2.4.6.8	140	100	56	24	50	8	20	90	10	34	170	12	180	180	95	255	345
90L			125									210						385
100L	2.4.6.8	160	140	63	28	60	8	24	100	12	39	186	14	200	205	95	285	390
112M	2.6.8	190	140	70	28	60	8	24	112	12	45	200	14	230	225	115	320	425
	4											230						455
132S	2.4.6.8	216	140	89	38	80	10	33	132	12	55	190	18	265	270	115	410	475
132M			178									230						510
160M	2.4.6.8	254	210	108	42	110	12	37	160	15	65	260	20	315	320	136	430	610
160L			254									304						655
180M	2.4.6.8	279	241	121	48	110	14	42.5	180	15	70	311	22	355	360	136	480	680
180L			279									349						715
200L	2.4.6.8	318	305	133	55	110	16	49	200	19	74	379	26	395	400	190	540	770
225S	4.8	356	286	149	60	140	18	53	225	19	78	375	28	435	450	190	585	795
225M	2		311	149	55	110	16	49				400						800
	4.6.8		60	140	18	53	825											
250M	2	406	349	168	60	140	18	53	250	24	80	445	30	490	510	225	665	890
	4.6.8				65	140	18	58										
280S	2	457	368	190	65	140	18	58	280	24	90	485	35	545	550	225	710	975
	4.6.8				75	140	20	67.5										

B3 (Horizontal foot mounted only)

机座号 Frame	极数 Pole	安 装 尺 寸 Mounting Dimension										外形尺寸 Overall Dimension							
		A	B	C	D	E	F	G	H	K	AA	BB	HA	AB	AC	AD	HD	L	
280M	2	457	419	190	65	140	18	58	280	24	90	536	35	545	550	225	710	1025	
	75				140	20	67.5												
315S	2	508	406	216	65	140	18	58	315	28	120	570	45	635	630	250	885	1180	
	80				170	22	71	1210											
315M	2	508	457	216	65	140	18	58	315	28	120	610	45	635	630	250	885	1215	
	80				170	22	71	1245											
315L	2	508	508	216	65	140	18	58	315	28	120	680	45	635	630	250	885	1290	
	80				170	22	71	1320											
355M	2	610	560	254	75	140	20	67.5	355	28	130	690	52	735	715	290	1040	1390	
	95				170	25	86	1420											
355L1/L2	2	610	630	254	75	140	20	67.5	355	28	130	750	52	735	715	290	1040	1500	
	95				170	25	86	1530											

B5 (Footless and B5 flange mounted)

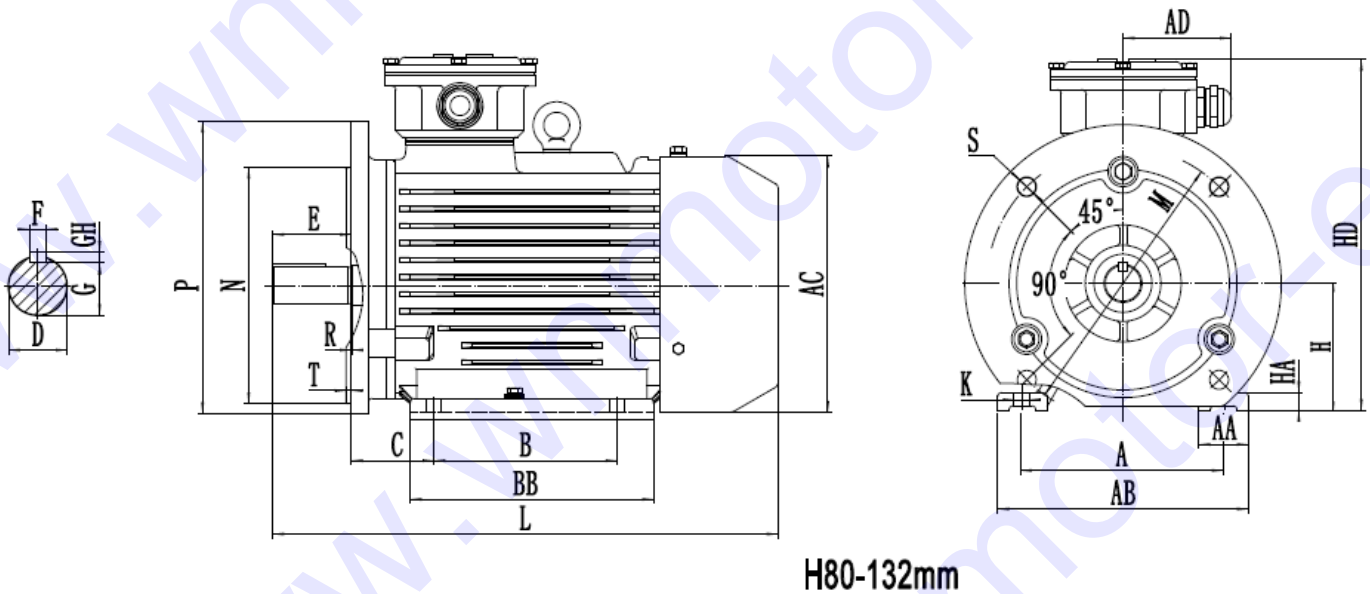


Frame	Poles	Mounting Dimension										Overall Dimension			
		D	E	F	G	M	N	P	R	S	T	AC	AD	HF	L
80M	2.4.6.8	19	40	6	15.5	165	130	200	0	4-φ12	3.5	165	160	/	295
90S	2.4.6.8	24	50	8	20	165	130	200	0	4-φ12	3.5	180	165	/	345
90L															385
100L	2.4.6.8	28	60	8	24	215	180	250	0	4-φ15	4	205	180	/	390
112M	2.6.8	28	60	8	24	215	180	250	0	4-φ15	4	225	205	/	425
	4														455
132S	2.4.6.8	38	80	10	33	265	230	300	0	4-φ15	4	270	240	/	475
132M															510

B5 (Footless and B5 flange mounted)

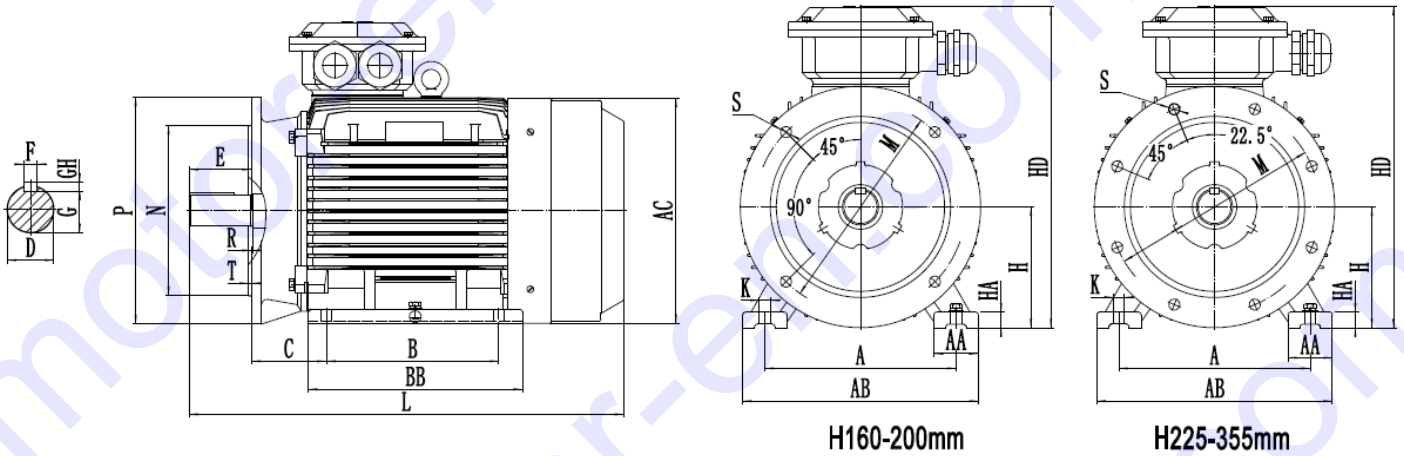
Frame	Poles	Mounting Dimension										Overall Dimension				
		D	E	F	G	M	N	P	R	S	T	AC	AD	HF	L	
160M	2.4.6.8	42	110	12	37	300	250	350	0	4-φ19	5	320	270	435	610	
160L															655	
180M	2.4.6.8	48	110	14	42.5	300	250	350	0	4-φ19	5	360	285	490	680	
180L															715	
200L	2.4.6.8	55	110	16	49	350	300	400	0	4-φ19	5	400	335	550	770	
225S	4.8	60	140	18	53	400	350	450	0	8-φ19	5	450	360	580	795	
225M	2	55	110	16	49										800	
	4.6.8	60	140	18	53										825	
250M	2	60	140	18	53	500	450	550	0	8-φ19	5	510	415	695	890	
	4.6.8	65			58											
280S	2	65	140	18	58	500	450	550	0	8-φ19	5	550	435	725	975	
	4.6.8	75			67.5											
280M	2	65			18										58	1025
	4.6.8	75			20										67.5	

B35 (Foot and B5 flange mounted)



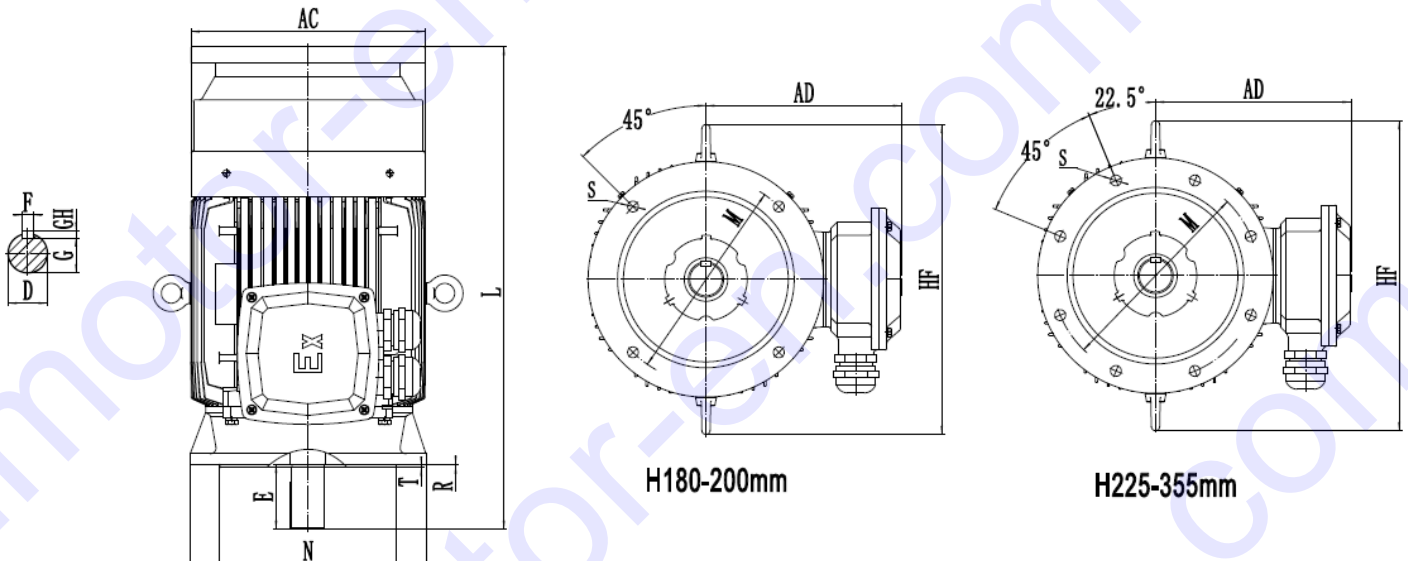
Frame	Poles	Mounting Dimension														Overall Dimension									
		A	B	C	D	E	F	G	H	M	N	P	R	S	T	K	AA	BB	HA	AB	AC	AD	HD	L	
80M	2.4.6.8	125	100	50	19	40	6	15.5	80	165	130	200	0	4-φ12	3.5	10	32	135	10	160	165	95	240	295	
90S	2.4.6.8	140	100	56	24	50	8	20	90	165	130	200	0	4-φ12	3.5	10	34	145	12	180	180	95	255	345	
90L			125															170						385	
100L	2.4.6.8	160	140	63	28	60	8	24	100	215	180	250	0	4-φ15	4	12	39	186	14	200	205	95	285	390	
112M	2.6.8	190	140	70	28	60	8	24	112	215	180	250	0	4-φ15	4	12	45	200	14	230	225	115	320	425	
	4																	230						455	
132S	2.4.6.8	216	140	89	38	80	10	33	132	265	230	300	0	4-φ15	4	12	55	190	18	265	270	115	410	475	
132M			178															230						510	

B35 (Foot and B5 flange mounted)



Frame	Poles	Mounting Dimension														Overall Dimension								
		A	B	C	D	E	F	G	H	M	N	P	R	S	T	K	AA	BB	HA	AB	AC	AD	HD	L
160M	2.4.6.8	254	210	108	42	110	12	37	160	300	250	350	0	4-φ19	5	15	65	260	20	315	320	136	430	610
160L			0										304					655						
180M	2.4.6.8	279	241	121	48	110	14	42.5	180	300	250	350	0	4-φ19	5	15	70	311	22	355	360	136	480	680
180L			0										349					715						
200L	2.4.6.8	318	305	133	55	110	16	49	200	350	300	400	0	4-φ19	5	19	74	379	26	395	400	190	540	770
225S	4.8	356	286	149	60	140	18	53	225	400	350	450	0	8-φ19	5	19	78	375	28	435	450	190	585	795
225M	2	356	311	149	55	110	16	49	225	400	350	450	0	8-φ19	5	19	78	400	28	435	450	190	585	800
	4.6.8				60	140	18	53																825
250M	2	406	349	168	60	140	18	53	250	500	450	550	0	8-φ19	5	24	80	445	30	490	510	225	665	890
	4.6.8				65			58																
280S	2	457	368	190	65	140	18	58	280	500	450	550	0	8-φ19	5	24	90	485	35	545	550	225	710	975
	4.6.8				75	140	20	67.5																1025
280M	2	457	419	190	65	140	18	58	280	500	450	550	0	8-φ19	5	24	90	536	35	545	550	225	710	1025
	4.6.8				75	140	20	67.5																
315S	2	406	457	216	65	140	18	58	315	600	550	660	0	8-φ24	6	28	120	570	45	635	630	250	885	1180
	4.6.8.10				80	170	22	71																1215
315M	2	508	457	216	65	140	18	58	315	600	550	660	0	8-φ24	6	28	120	610	45	635	630	250	885	1215
	4.6.8.10				80	170	22	71																1245
315L	2	508	457	216	65	140	18	58	315	600	550	660	0	8-φ24	6	28	120	680	45	635	630	250	885	1290
	4.6.8.10				80	170	22	71																1320
355M	2	560	610	254	75	140	20	67.5	355	740	680	800	0	8-φ24	6	28	130	690	52	735	715	290	1040	1390
	4.6.8.10				95	170	25	86																1420
355L1	2	610	457	216	75	140	20	67.5	355	740	680	800	0	8-φ24	6	28	130	750	52	735	715	290	1040	1500
355L2	4.6.8.10				95	170	25	86																1530
355L3	2	630	457	216	80	170	22	71	355	740	680	800	0	8-φ24	6	28	130	750	52	735	715	290	1040	1530
355L4	4.6.8.10				110	210	28	100																1570

V1 (Vertical shaft down footless flange mounted)



H180-200mm

H225-355mm

Frame	Poles	Mounting Dimension										Overall Dimension			
		D	E	F	G	M	N	P	R	S	T	AC	AD	HF	L
180M	2,4,6,8	48	110	14	42.5	300	250	350	0	4-Φ19	5	360	285	490	725
180L	2,4,6,8														765
200L	2,4,6,8	55	110	16	49	350	300	400	0	4-Φ19	5	400	335	550	825
225S	4,8	60	140	18	53	400	350	450	0	8-Φ19	5	450	360	580	855
225M	2	55	110	16	49										860
		4,6,8	60	140	18	53	885								
250M	2	60	140	18	53	500	450	550	0	8-Φ19	5	510	380	695	955
		4,6,8													
280S	2	65	140	18	58	500	450	550	0	8-Φ19	5	550	395	725	1045
		4,6,8		75	20										
280M	2	65		18	58										1100
		4,6,8		75	20										
315S	2	65	140	18	58	600	550	660	0	8-Φ24	6	630	565	860	1310
		4,6,8,10	80	170	22										71
315M	2	65	140	18	58	740	680	800	0	8-Φ24	6	715	680	980	1345
		4,6,8,10	80	170	22										71
315L	2	65	140	18	58	1420									
		4,6,8,10	80	170	22		71	1450							
355M	2	75	140	20	67.5	1530									
		4,6,8,10	95	170	25		86	1560							
355L1/L2	2	75	140	20	67.5	1640									
		4,6,8,10	95	170	25		86	1670							
355L3/L4	2	80	170	22	71	1670									
		4,6,8,10	110	210	28		100	1710							

Terminal box and the cable entry size are given in the table below:

No.	Frame	Terminal size	Grounding terminal size	Cable entrance size
1	H80	M4	M5	1-M24×1.5
2	H90,H100	M5	M5	1-M24×1.5
3	H112, H132	M5	M5	2-M30×2
4	H160, H180	M6	M5	2-M36×2
5	H200, H225	M8	M8	2-M48×2
6	H250, H280	M10	M10	2-M64×2
7	H315	M16	M12	2-M64×2
8	H355	M20	M12	2-M72×2

Conventional mounting type and suitable frame size are given in following table (with “√”) :

Frame	Basic Type			Derived Type													
	B3	B5	B35	V1	V3	V5	V6	B6	B7	B8	V15	V17	V35	V37	B14	B34	V18
80~112	√	√	√	√	√	√	√	√	√	√	√	√	√	√	√	√	√
132~160	√	√	√	√	√	√	√	√	√	√	√	√	√	√	-	-	-
180~280	√	√	√	√	-	-	-	-	-	-	-	-	-	-	-	-	-
315~355	√	-	√	√	-	-	-	-	-	-	-	-	-	-	-	-	-

Note: “√” indicates the type of structure that can be manufactured.